

A Leading Global  
**Professional  
Visual Inspection**  
Equipment Manufacturer

**AOI**



# COMPANY PROFILE

Jutze is a professional visual inspection equipment manufacturer. Since being established, with leading technology and continuous innovation, Jutze high-speed and high-precision optical inspection equipment is widely used in consumer electronics, communications terminal equipment, computer and peripheral equipment, industrial control, automotive electronics and other fields. With rich experience and considerate services, Jutze has been recognized as reliable supplier for many international customers, who strives to provide customers with top quality and innovation products. Company is committed to become the world's leading manufacturer of AOI, providing customers with the best products and services in order to create new value for the community.

DO.TRUST

# High Speed, High Precision —



# Machine Vision Expert

JUTZE AOI machines are applied for inspecting the most precision components

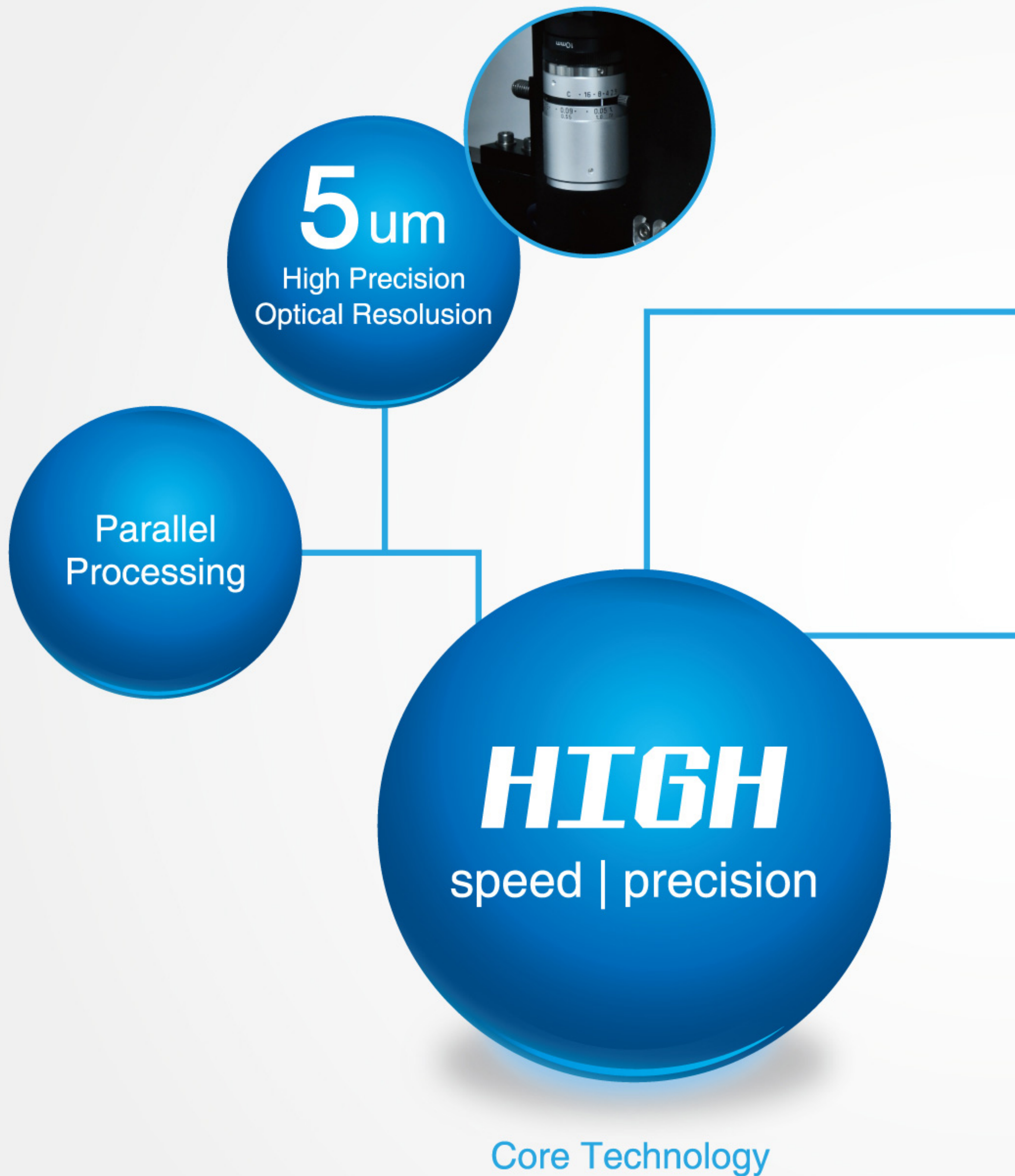
03015



**JUTZE**  
LI-6000



# DO.TRUST





Collect data of SPI, pre-reflow AOI, post-reflow AOI, and reflow furnace, analyze causes of NG to realize whole process control of the production line.

Real time SPC data analysis

Line management greatly save production labors

Remote tuning and update program without machine stop



## New Vision System

- 6 Channel Lighting
- High-speed multi-shot capturing
- Multiple light angles
- Multiple colors
- No Bayer Pattern



## LI-6000

### L Size Inline Automatic Machine

Max.Board Size: 50mmX70mm ~510mmX460mm

Board Thickness: 0.6mm ~ 6.0mm

Resolution: 12 um (5um-17.5um option)



# LI-6000D

## Dual-lane L size Inline Automatic Machine

### LI-6000D Max.Board Size

Single-lane mode: 50mmX70mm ~535mmX590mm  
 Dual-lane mode: 50mmX70mm ~ 535mmX330mm  
 Board Thickness: 0.6mm ~ 6.0mm  
 Resolution: 12 um (5um-17.5um option)



# LI-5000

## L Size Inline Automatic Machine

Max.Board Size: 50mmX70mm ~510mmX460mm  
 Board Thickness: 0.6mm ~ 6.0mm  
 Resolution: 12 um (5um-17.5um option)



# LI-3000DP

## Dual-lane L size Inline Automatic Machine

### LI-3000DP Max.Board Size

Single-lane mode: 50mmX70mm ~535mmX590mm  
 Dual-lane mode: 50mmX70mm ~ 535mmX330mm  
 Board Thickness: 0.6mm ~ 6.0mm  
 Resolution: 12 um (5um-17.5um option)



## Practical and Flexible

Reliable Quality Controller



## MD-2000

### M Size Offline Machine

Max.Board Size: 50mmX50mm ~ 330mmX250mm

Board Thickness: 0.4mm ~ 3.0mm

Resolution: 12 um (5um-17.5um option)





# LD-5000

## L Size Offline Machine

Max.Board Size: 50mmX50mm ~ 510mmX460mm

Board Thickness: 0.6mm ~ 3.0mm

Resolution: 12 um (5um-17.5um option)



# XD-2000

## XL Size Offline Machine

Max.Board Size: 50mmX100mm ~ 650mmX550mm

Board Thickness: 0.6mm ~ 3.0mm

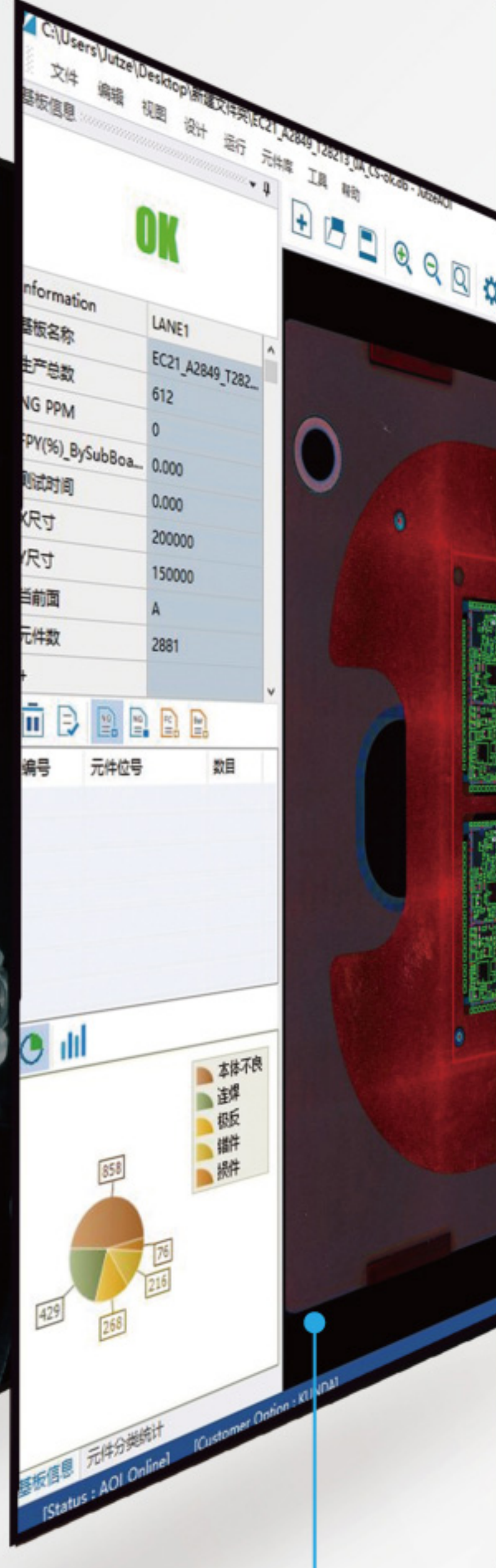
Resolution: 12 um (5um-17.5um option)





## High Precision Image Systems

9.1M Pixel Camera  
Telecentric Lens



## Remote Tuning

Connecting the inline equipment to a network allows testing and fine tuning machine parameters live without stopping the line.



## Repair Terminal

A repair terminal can receive and display inspection results from inline machines in real time which allows handling of false errors quickly. Multiple inline AOI machines can be utilized, as well as a barcode scanning function for individual PCB identification and selection. A statistic report of the production throughput and failure rate can be viewed at any time.





## Line management

One user can operate different lines at the same time and monitor the inspection results of multiple AOI machines, greatly saving labor and cost. This allows assisting the production without suspending machines and increases efficiency.

## SPC

The SPC software comprises a user friendly interface, and allows monitoring multiple lines at the same time. The powerful data analysis system helps tracing PCB barcodes and output production statistic, failure judgments analysis and statistic tables.

## Line defect analysis

Line defect analysis helps tracking down issues by comparing inspection images at different stages in the line, such as after SPI, pre-reflow and post-reflow.

## Barcode

A comprehensive solution offering support for various 1D and 2D codes. 1D codes larger than a single FOV image are also supported.  
1D: code 93, code 128, code 39....  
2D: QR, Data Matrix, PDF 417.



Machine Vision Expert

**JUTZE**  
DO. TRUST



## ■ Production Specifications

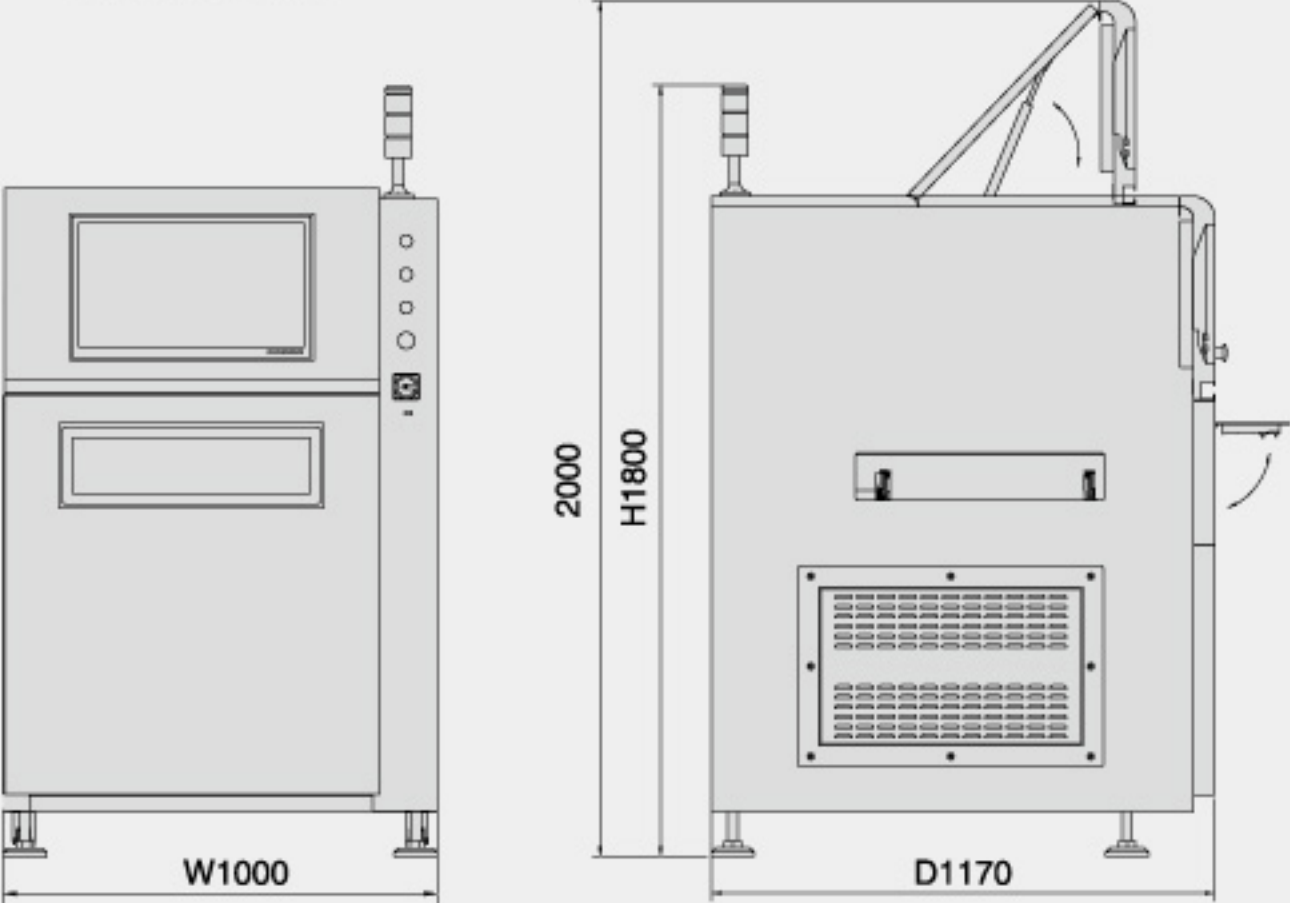
Items		LI-6000	LI-6000D	LI-5000	XI-2000	LI-3000DP
Board	PCB Size	50mmX70mm ~ 510mmX460mm	Single-lane mode 50mmX70mm-535mmX590mm Dual-lane mode 50mmX70mm-535mmX330mm	50mmX70mm ~ 510mmX460mm	50mmX70mm ~ 650mmX560mm	Single-lane mode 50mmX70mm-535mmX590mm Dual-lane mode 50mmX70mm-535mmX330mm
	PCB Clearance	Top: 35mm Lower: 50mm	Top: 35mm Lower: 50mm	Top: 35mm Lower: 50mm	Top: 45mm Lower: 50mm	Top: 35mm Lower: 50mm
	PCB Thickness	0.6mm ~ 6mm	0.6mm ~ 6mm	0.6mm ~ 6mm	0.6mm ~ 6mm	0.6mm ~ 6mm
Conveyor	Height	900±20mm	920±20mm	900±20mm	900±20mm	940±20mm
	Flow Direction	Setting according to customer request				
Machine External Dimensions		W1000mm X D1170mm X H1800mm	W1083mm X D1445mm X H1800mm	W1000mm X D1170mm X H1800mm	W1200mm X D1200mm X H1840mm	W1080mm X D1390mm X H1840mm
Machine Weight		734Kg	945Kg	734Kg	900Kg	945Kg
Optical systems	Camera	9.1M Digital Camera (5M, 12M Digital Camera option)		5M Industrial Digital Camera (9.1M option)		
		Telecentric Lens (option)				
	Lighting Systems	High Gray and 6Chanel LED Light Source	High Gray and 4 Chanel LED Light Source			
	resolution	12um (5um – 17.5um option)				
	FOV Size	36.7mm*30.7mm (5M 15um)				
	Take imaging/calculate time	3 ~ 5 FOV/sec				
Inspection Items		Missing, Shift, Polarity, Tombstone, Bridge, Insufficient Solder, Lifted Chip, OCV				
Power Supply		AC220V 50/60Hz 1.8kVA				
Air Source		0.5 MPa				
Environment request		Temperature 5~40 , Humidity 25% ~ 80% Non-condensing				
Communication Manner		Standard SMEMA Port				

## ■ Production Specifications

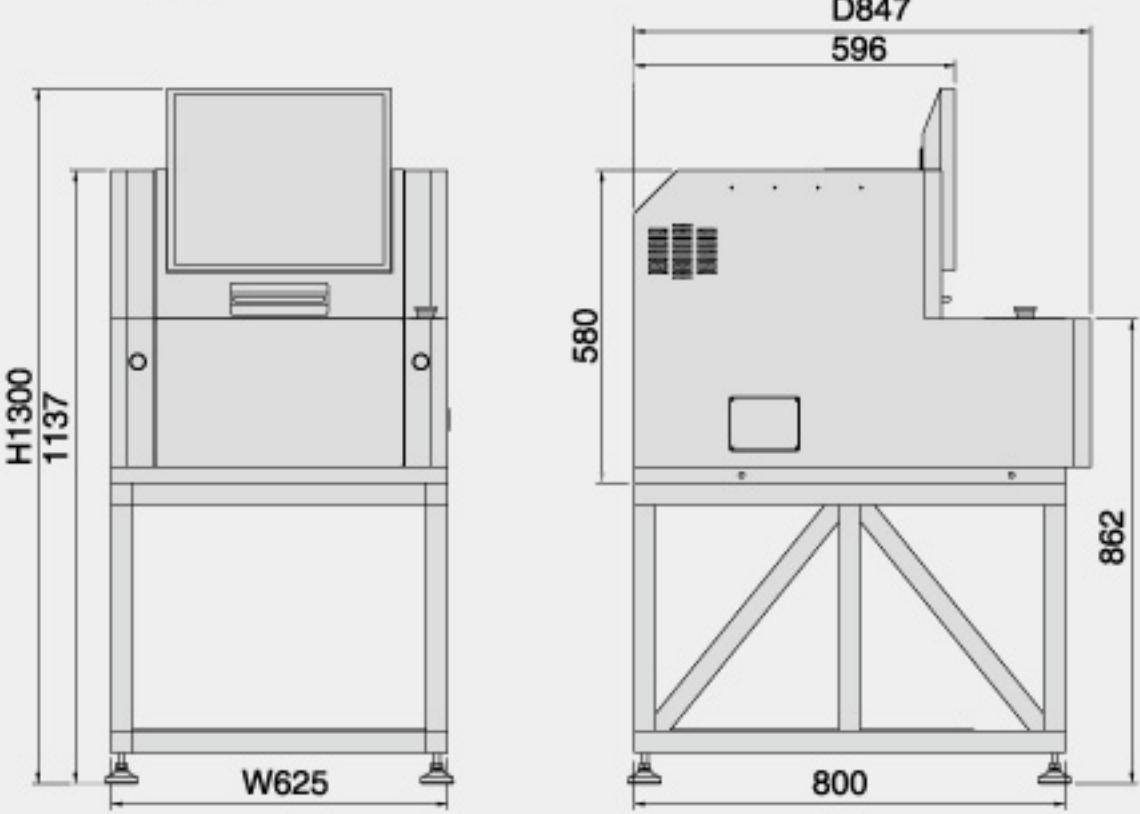
Items		MD-2000	LD-5000	XD-2000
Board	PCB Size	50mmX50mm ~ 330mmX250mm	50mmX50mm ~ 510mmX460mm	50mmX100mm ~ 650mmX550mm
	PCB Clearance	Top: 30mm Lower: 40mm	Top:50mm Lower:75mm	Top: 35mm Lower: 75mm
	PCB Thickness	0.4mm ~ 3mm	0.6mm ~ 3mm	0.6mm ~ 3mm
Machine External Dimensions		W625mm X D847mm X H1300mm	W900mm X D1250mm X H1300mm	W1115mm X D1450mm X H1216mm
Machine Weight		168Kg	380Kg	499Kg
Optical systems	Camera	5M Camera; High Resolution Lens, Telecentric Lens(option)		
	Lighting Systems	High Gray and 4 Channels LED Light Source		
	resolution	12um (5um – 17.5um option)		
	FOV Size	36.7mm*30.7mm (5M 15um)		
	Take imaging/calculate time	3 ~ 5 FOV/sec		
Inspection Items		Missing, Shift, Polarity, Tombstone, Bridge, Insufficient Solder, Lifted Chip, OCV		
Power Supply		AC220V 50/60Hz 1.5kVA		
Environment request		Temperature 5~40 , Humidity 25% ~ 80% Non-condensing		



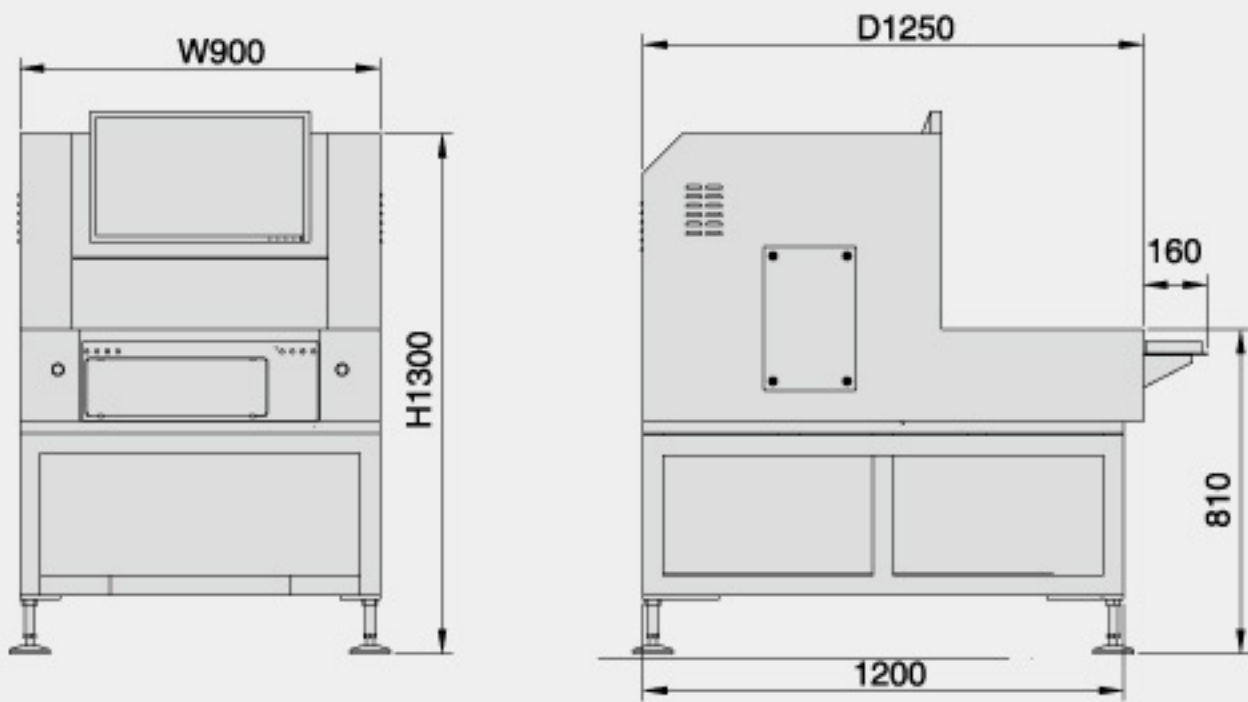
LI-5000/6000



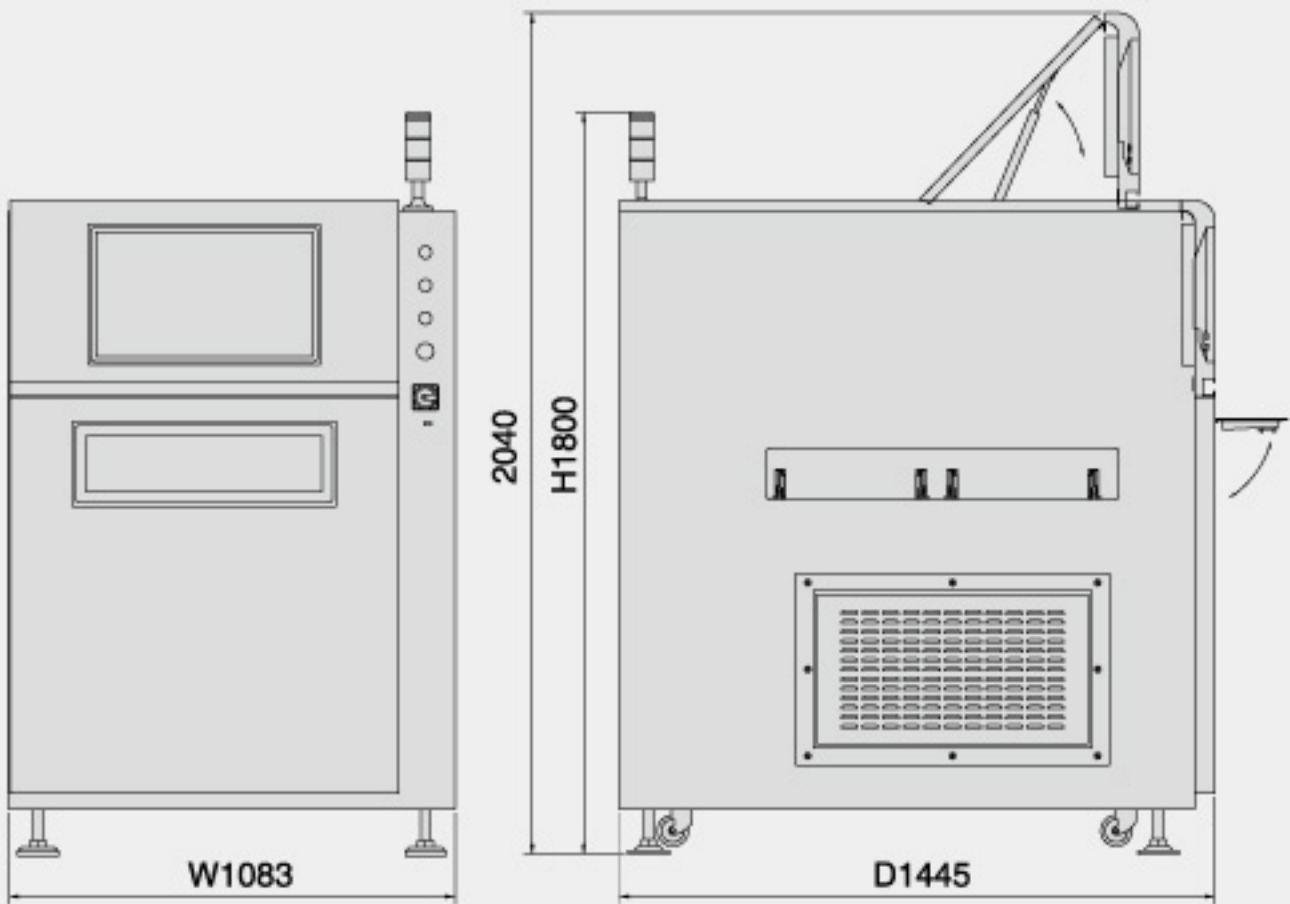
MD-2000



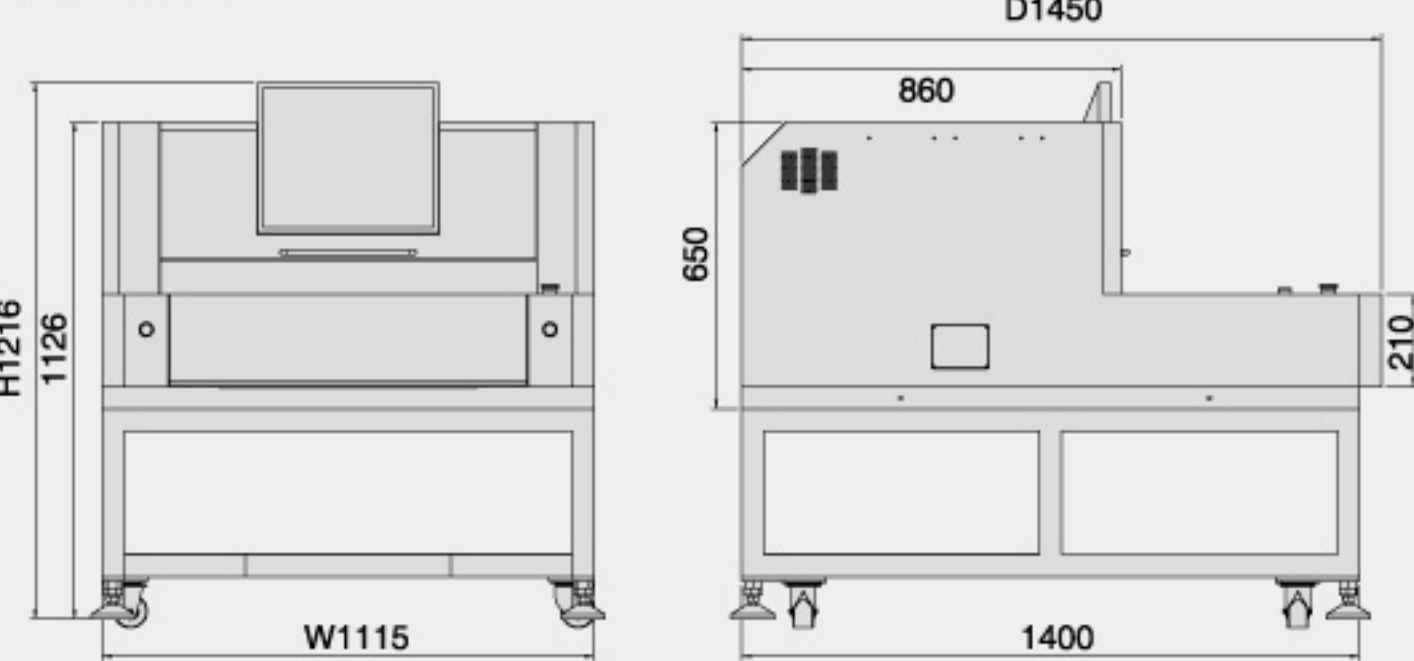
LD-5000



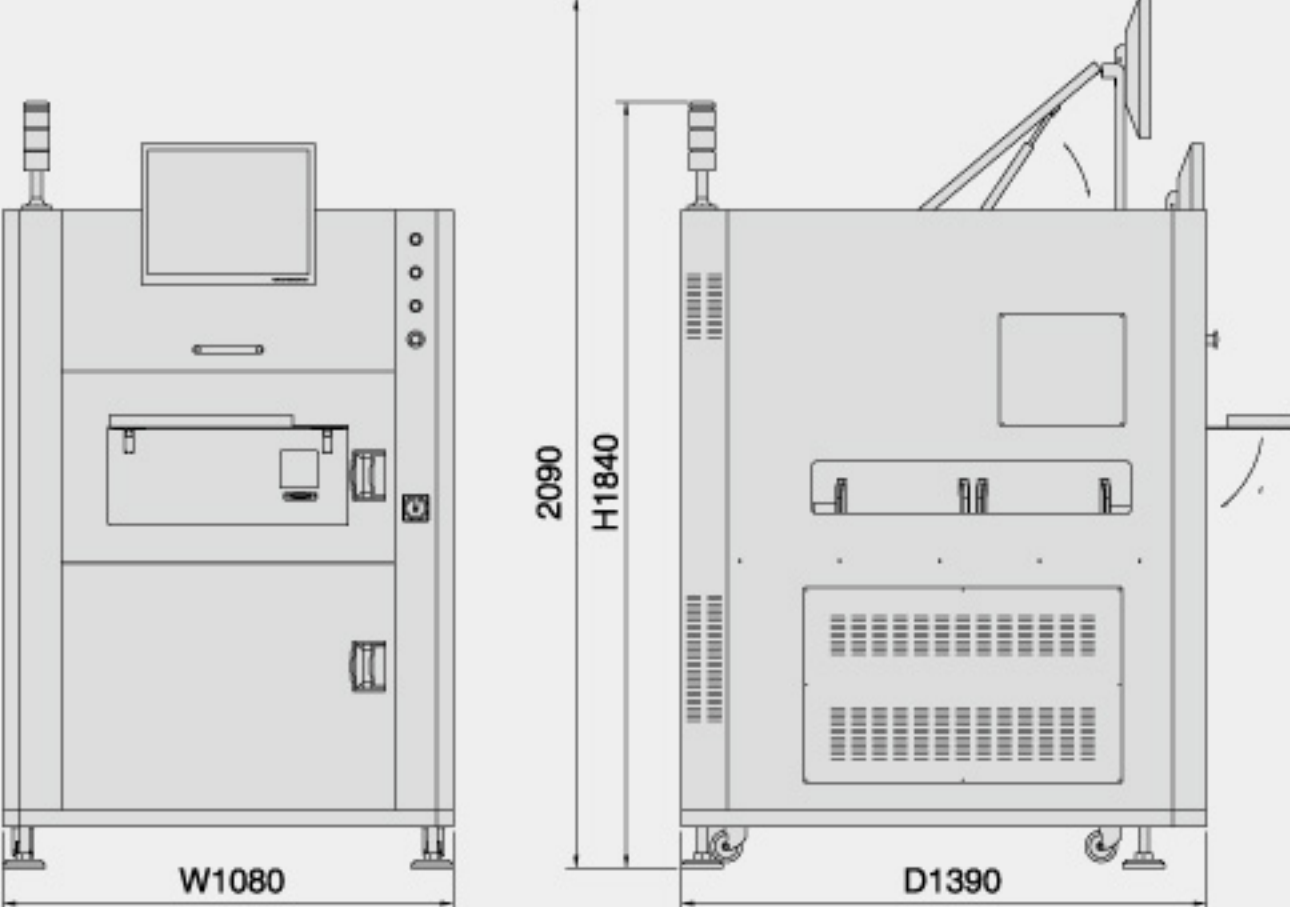
LI-6000D



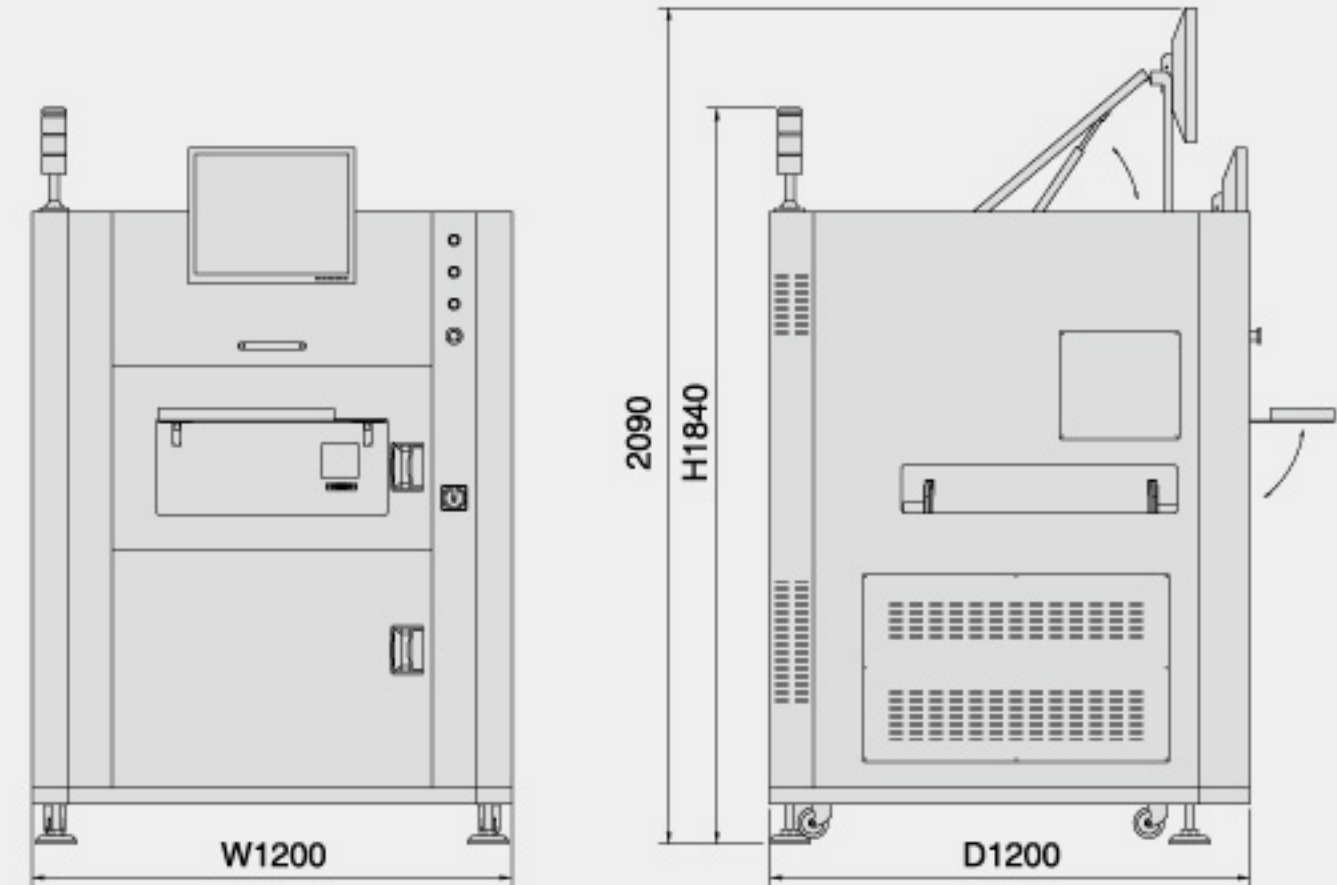
XD-2000



LI-3000DP



XI-2000







**JUTZE**  
DO.TRUST

A leading global  
**Professional  
Visual Inspection**  
Equipment Manufacturer

<http://www.jutze.com.cn>

注意事项：本目录资料经仔细核对，如发现错误请及时联系本公司，使用前请务必仔细阅读《产品使用说明书》。

**炬子科技股份有限公司**  
JUTZE INTELLIGENCE TECHNOLOGY CO.,LTD

E-mail:master@jutze.com.cn  
Service E-mail:support@jutze.com.cn

**JUTZE**  
DO.TRUST

[Http://www.jutze.com.cn](http://www.jutze.com.cn)

#### Suzhou

Add: Jutze Building, No.55 Jixian Street, Suzhou Industrial Park, P.R.C  
Tel: +86-512-62988188 Fax: +86-512-62981886

#### Shanghai

Add: Room101-102,Building E,Minggu Science Park,No.7001  
Zhongchun RD, Minhang District, Shanghai, P.R.C  
Tel: +86-21-34687800 Fax: +86-21-34687805

#### Shenzhen

Add: No. 9, 8F, Yisibo Software Building, Haitian Er Road, Yuehai Street,  
Nanshan District, Shenzhen, Guangdong Province, P.R.C  
Mobile: 133 9114 5008

#### Japan

Add: KSP East 410, 3-2-1, Sakado, Takatsu-ku, Kawasaki-shi,  
Kanagawa 213-0012, Japan  
Tel: 044-712-5509 Fax: 044-712-5519