



# Mirage

**3D SPI**

A Leading Global

**Professional  
Visual Inspection**

Equipment Manufacturer

Full view 3D images with high precision data

## 3D Inline Automated Solder Paste Inspection

Built upon latest projecting measurement technology, Jutze provides the 3D solder paste inspection equipment featuring industry leading inspection accuracy and performance.

Using Shadow-free dual digital fringe projectors, Jutze's highly reliable SPI can fundamentally prevent defects caused during solder printing process, which is suitable for wide variety of practical applications.

**01** Shadow-free Dual Digital Fringe Projectors with outstanding measurement accuracy

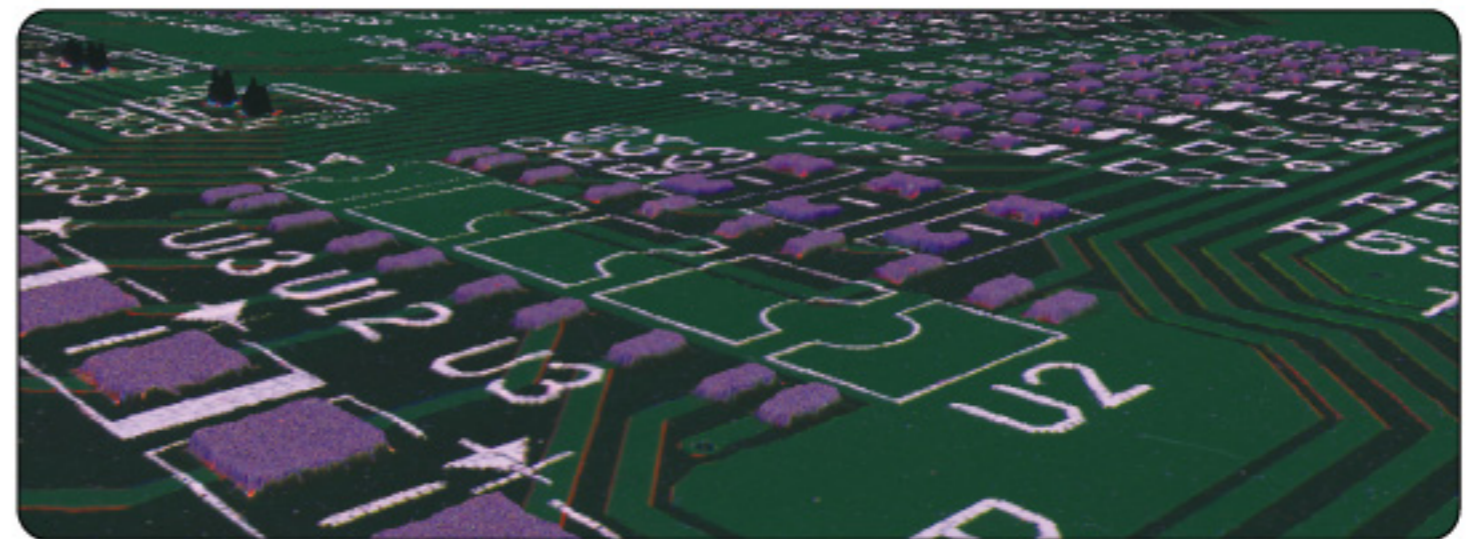
**02** Intelligent optimized inspection route for best performance

**03** Full 3D image view with 100% defect coverage

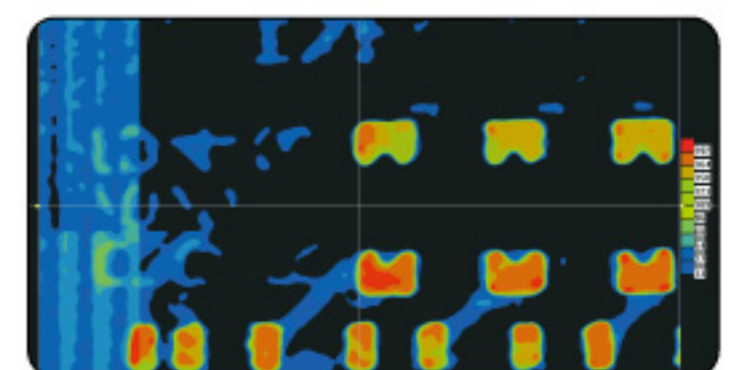
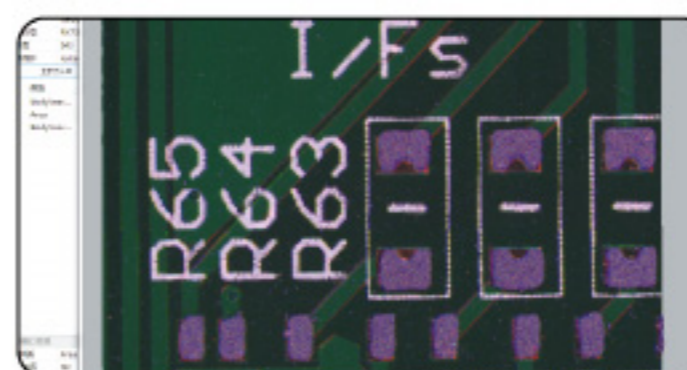
# Mirage



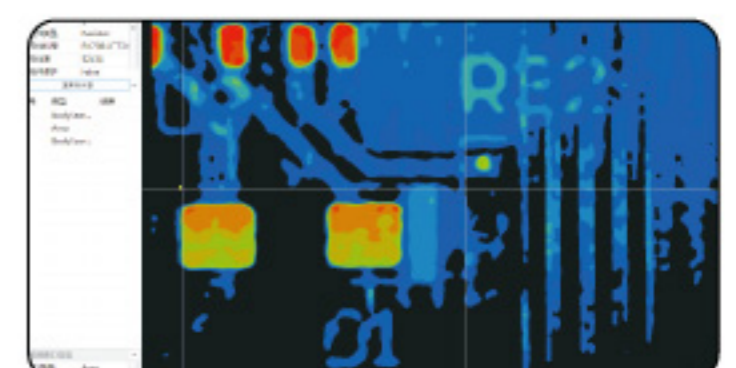
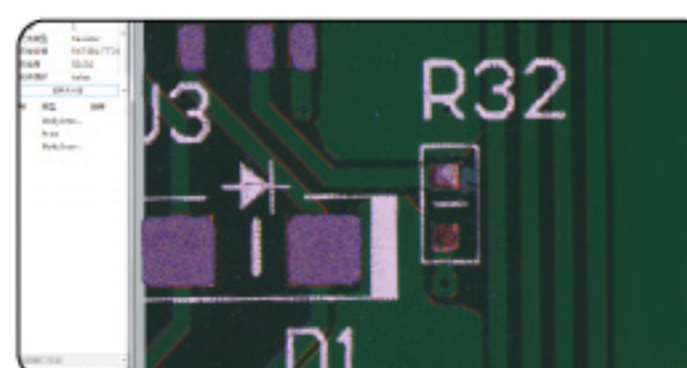
Show paste defects in real time by the whole board view in 3D



Solder paste view in 3D

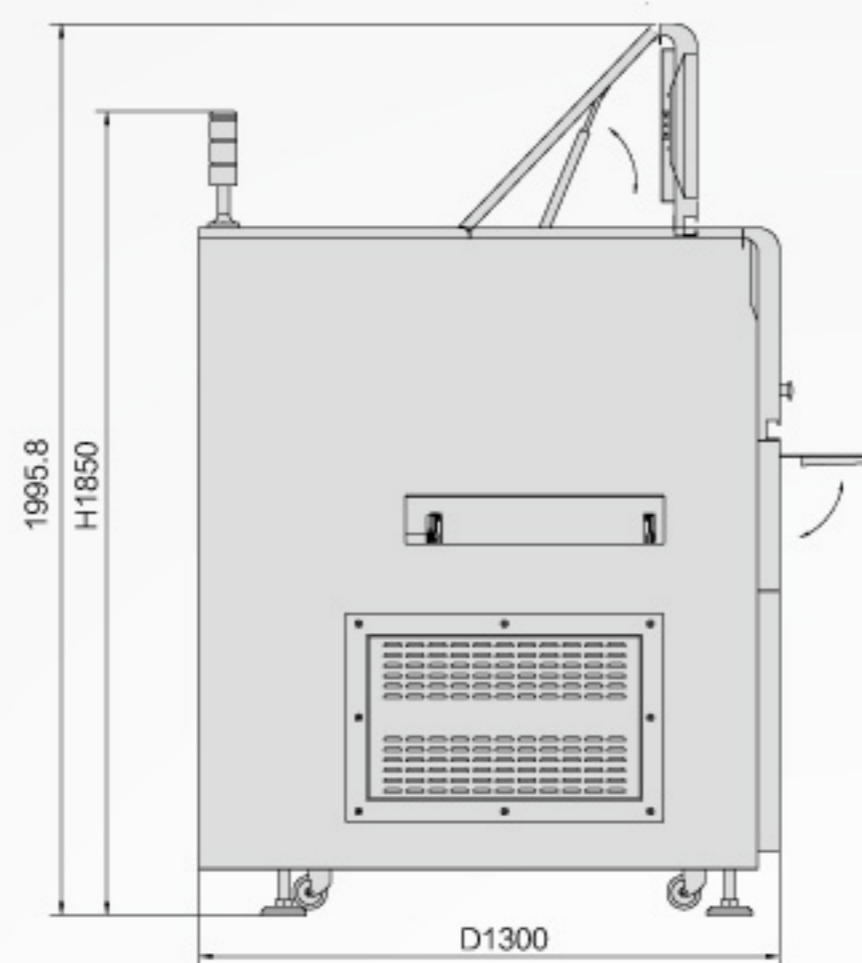


No paste, insufficient paste

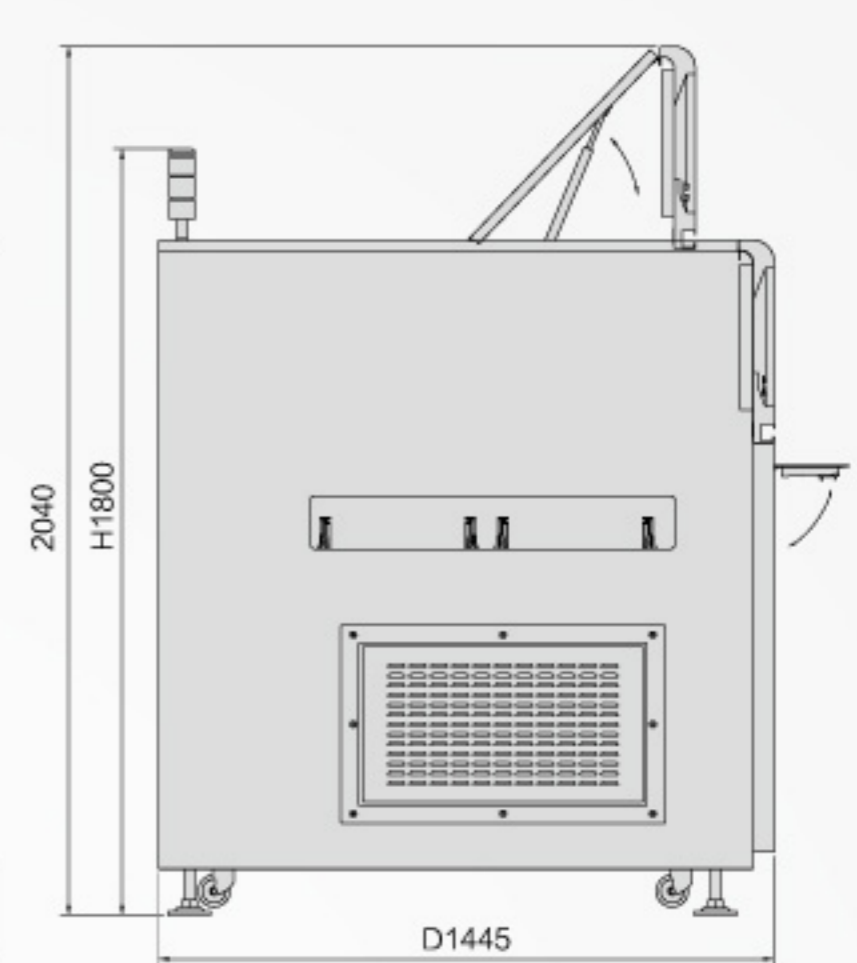
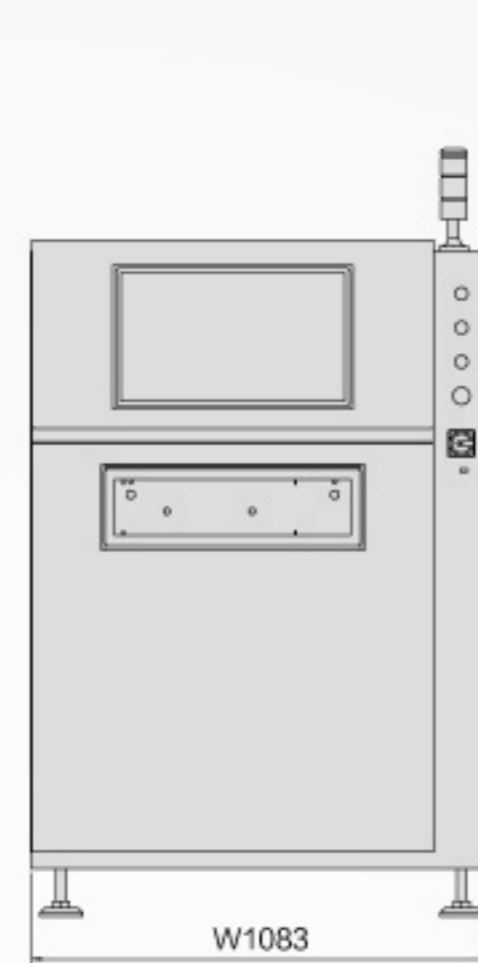


## Product Dimension in mm

### Mirage



### Mirage-D



Model	Mirage	Mirage-D
Lighting system	RGB+White LED ring lighting	
	3D two direction digital projector	
Vision system	4M /12M industrial high-speed camera	
Resolution	10um – 15um (adjustable)	
Height measuring resolution	1 μm	
Product size	W1080 x D1300 x H1850mm	W1083mm x D1445mm x H1800mm
Weight	777KG	950KG
FOV size	30.6 x 30.6mm (4M, 15um) 40.9 x 30.7mm (12M, 10um)	
PCB size	50mm x 70mm ~ 510mm x 460mm	Single lane: 50mm x 70mm ~ 510mm x 590mm Dual lanes: 50mm x 70mm ~ 510mm x 330mm
PCB Thickness	0.6mm ~ 6mm	
Warpage compensation	± 3mm	
Inspection theory	2D + 3D image data analysis	
Inspection speed	330ms/FOV (2D+3D)	
Inspection defects	Insufficient paste,excessive paste,bridging,shifting,no paste,shorts,icicles,shape defect etc.	
Conveyor system	PCB fix clamping method: Bottom-up fix board clamping; Automatic loading and unloading; Automatic system rail width adjustment, SMEMA standard; Rail height: 900 ± 20mm	
Power requirements	AC 220V 50/60Hz, 1.8KVA	
Air requirements	0.5MPa	
Environment	Temperature: 5–40℃, Humidity: 25%–80% RH	
Interfaces	SMEMA	

<http://www.jutze.com.cn>

注意事项：本目录资料经仔细核对，如发现错误请及时联系本公司，使用前请务必仔细阅读《产品使用说明书》。

**炬子科技股份有限公司**  
JUTZE INTELLIGENCE TECHNOLOGY CO.,LTD

E-mail:master@jutze.com.cn  
Service E-mail:support@jutze.com.cn

**JUTZE**  
DO.TRUST

[Http://www.jutze.com.cn](http://www.jutze.com.cn)

#### Suzhou

Add: Jutze Building, No.55 Jixian Street, Suzhou Industrial Park, P.R.C  
Tel: +86-512-62988188 Fax: +86-512-62981886

#### Shanghai

Add: Room101-102,Building E,Minggu Science Park,No.7001  
Zhongchun RD, Minhang District, Shanghai, P.R.C  
Tel: +86-21-34687800 Fax: +86-21-34687805

#### Shenzhen

Add: No. 9, 8F, Yisibo Software Building, Haitian Er Road, Yuehai Street,  
Nanshan District, Shenzhen, Guangdong Province, P.R.C  
Mobile: 133 9114 5008

#### Japan

Add: KSP East 410, 3-2-1, Sakado, Takatsu-ku, Kawasaki-shi,  
Kanagawa 213-0012, Japan  
Tel: 044-712-5509 Fax: 044-712-5519